
Phone Holder and AnyDesk Setup Guide

This guide will teach you how to set up screen mirroring for your Einscan




SHINING 3D®


Download Anydesk at <https://anydesk.com/download>
Double-click to open. You will see the AnyDesk-Address.

This Desk

Your Desk can be accessed with this address.

[More information](#) 



AnyDesk-Address:


446 581 556

[Set password for unattended access...](#)
[Send invitation...](#)

Remote Desk

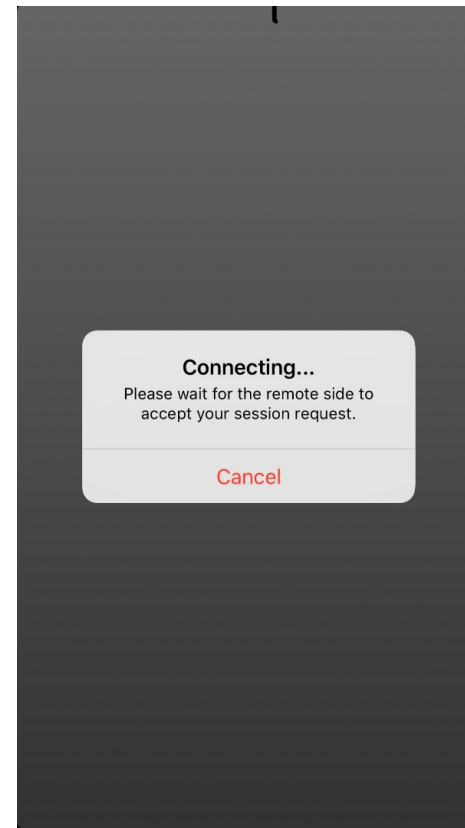
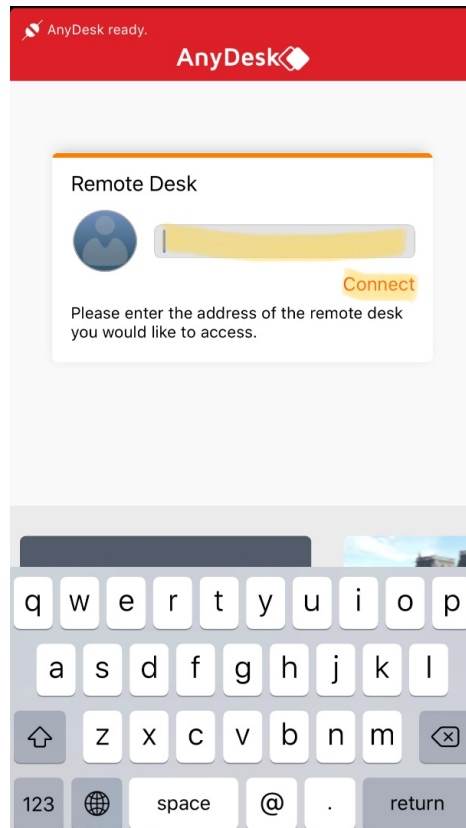
Please enter the address of the remote desk you would like to access.

[Browse Files](#)  [Connect](#) 

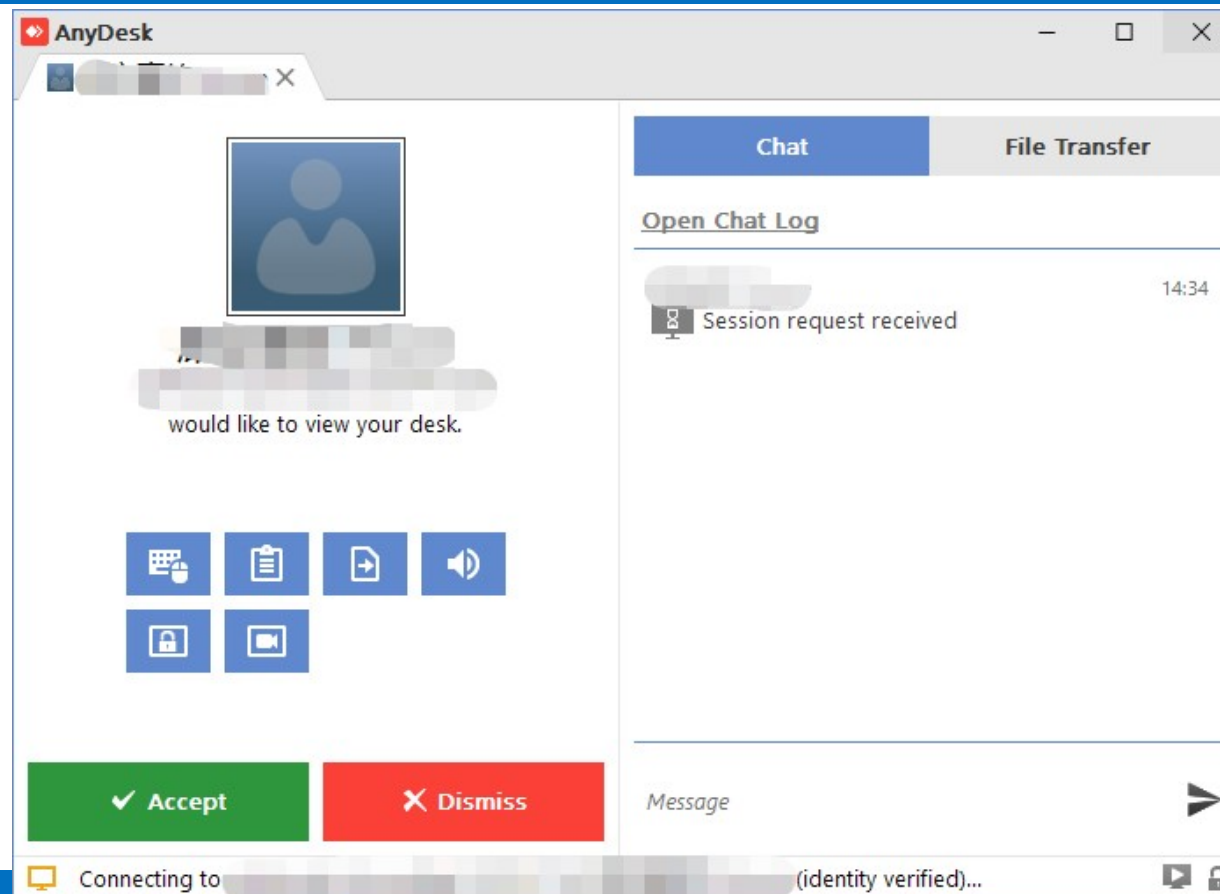
[More information](#) 

[Install AnyDesk on this computer...](#)

On your cellphone, download AnyDesk app and run it.
Type in the address and click connect.



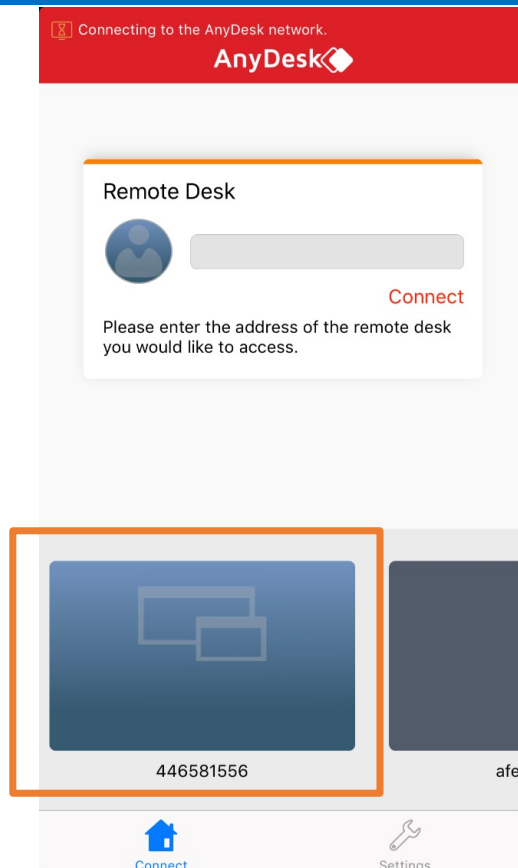
Accept the connection on your computer and you are good to go



SHINING 3D®

Tips

Tip 1: App will store connection history, so that next time you can just click to connect



Tip 2: If the computer and second screen is in same WLAN, Connection speed will be better.